



Cal. VX42E

ϕ 25.6 mm
H 2.62 mm

Items	Rev.	Page
Specifications	02	1
Appearance	03	2
Casing	04	3
Hand fitting	03	4
Hand setting stem	03	5
Dial-01	01	6-01
Dial-02	01	6-02
Dial-03	00	6-03
Dial-04	00	6-04
Dial-05	00	6-05
Dial-06	00	6-06
Dial-07	00	6-07
Dial-08	00	6-08
Dial-09	00	6-09
Dial-10	00	6-10
Dial-11	00	6-11
Dial-13	00	6-13
Dial-14	00	6-14
Dial-15	00	6-15
Dial-16	00	6-16
Casing ring	01	7

Date: 15/Apr./'11

S.EPSON Products

MOVEMENT SPECIFICATIONS

CAL. VX42E

Analog Quartz 11 1/2" Slim Movement / Three hands(H/M/S) with Calendar

1. MOVEMENT DIMENSIONS

*Outside diameter	φ 26.40mm × 23.50mm(3-9H) × 23.50mm(12-6H)
*Casing diameter	φ 25.60mm × 21.90mm(3-9H) × 23.50mm(12-6H)
*Total height	2.62mm (including battery)

2. TIME STANDARD

*Type of quartz oscillator	Tuning fork
*Frequency of quartz oscillator	32,768 Hz
*Accuracy	±20 seconds per month (on wrist)
*Operating temperature range	- 5°C to + 50°C
*Regulation device	Nil (Pre-adjusted)

3. INDICATOR / FUNCTIONS

*3 Hands	Hour / Minute / Second
*Calendar	Instant setting device for date calendar
*Reset switch	
*Setting mechanism	Crown at normal position : Free Crown pulled out 1st click : Instant date change Crown pulled out 2nd click : Time setting / Reset

4. FEATURES

*Jewels	0 Jewel
*Anti-magnetism	Over 1600A/m (Direct current magnetic field)
*Maximum unbalance of hands	Second hand : 7 mg•mm Minute hand : 60 mg•mm Hour hand : 50 mg•mm

5. BATTERY

*Type / Size	Silver oxide battery / φ 9.5mm × t 2.0mm
*Recommended battery	SR920SW (Maxell, Panasonic, Sony, Seizaiken)
*Nominal voltage	1.55 V
*Battery life	Approx. 3 years
*Driving current consumption	Approx. 1.50mA
*Operation stopping voltage	1.1 V

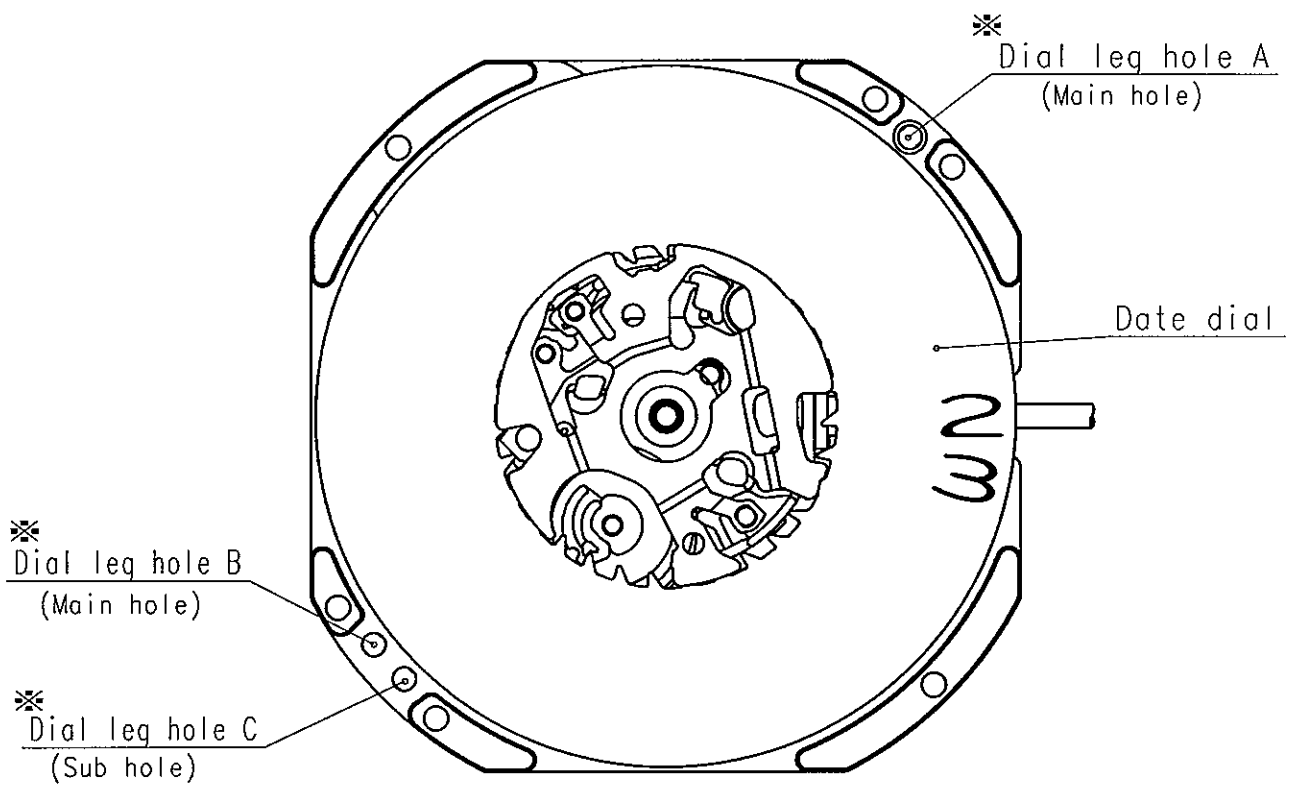
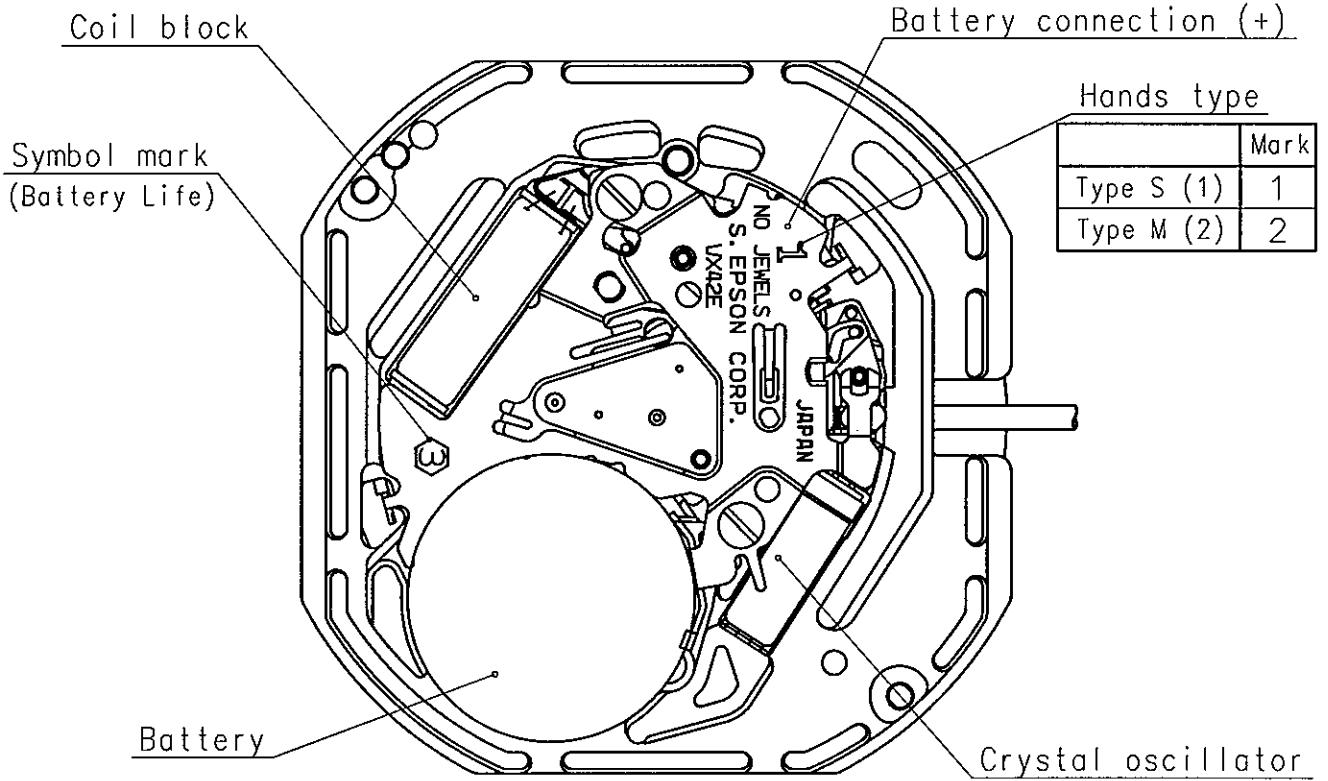
6. SEPARATED PARTS (Parts code)

*Hand setting stem	0351177 or 0351577
*Battery	SR920SW

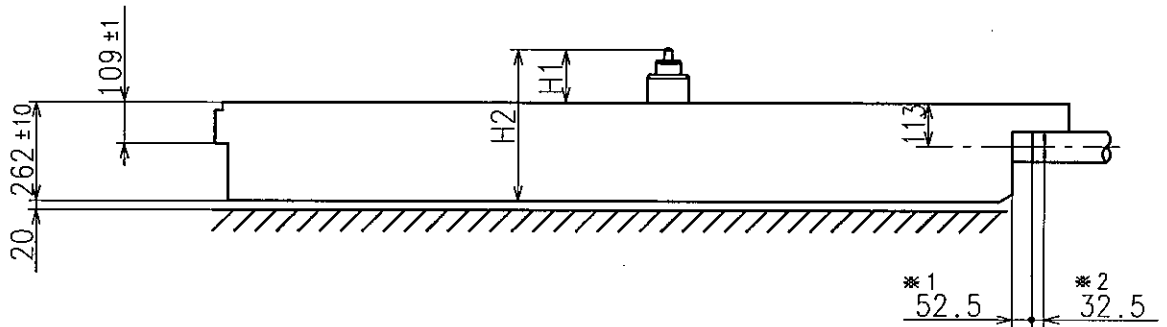
7. TEST OF ACCURACY

*Equipment to be used	SEIKO quartz tester QT-99, Greiner quartz timer-C , Witschi Q-tester 4000
*Duration of measurement	10 seconds
*Microphone to be used	Electromagnetic detection type

All specifications are subject to change without notice.



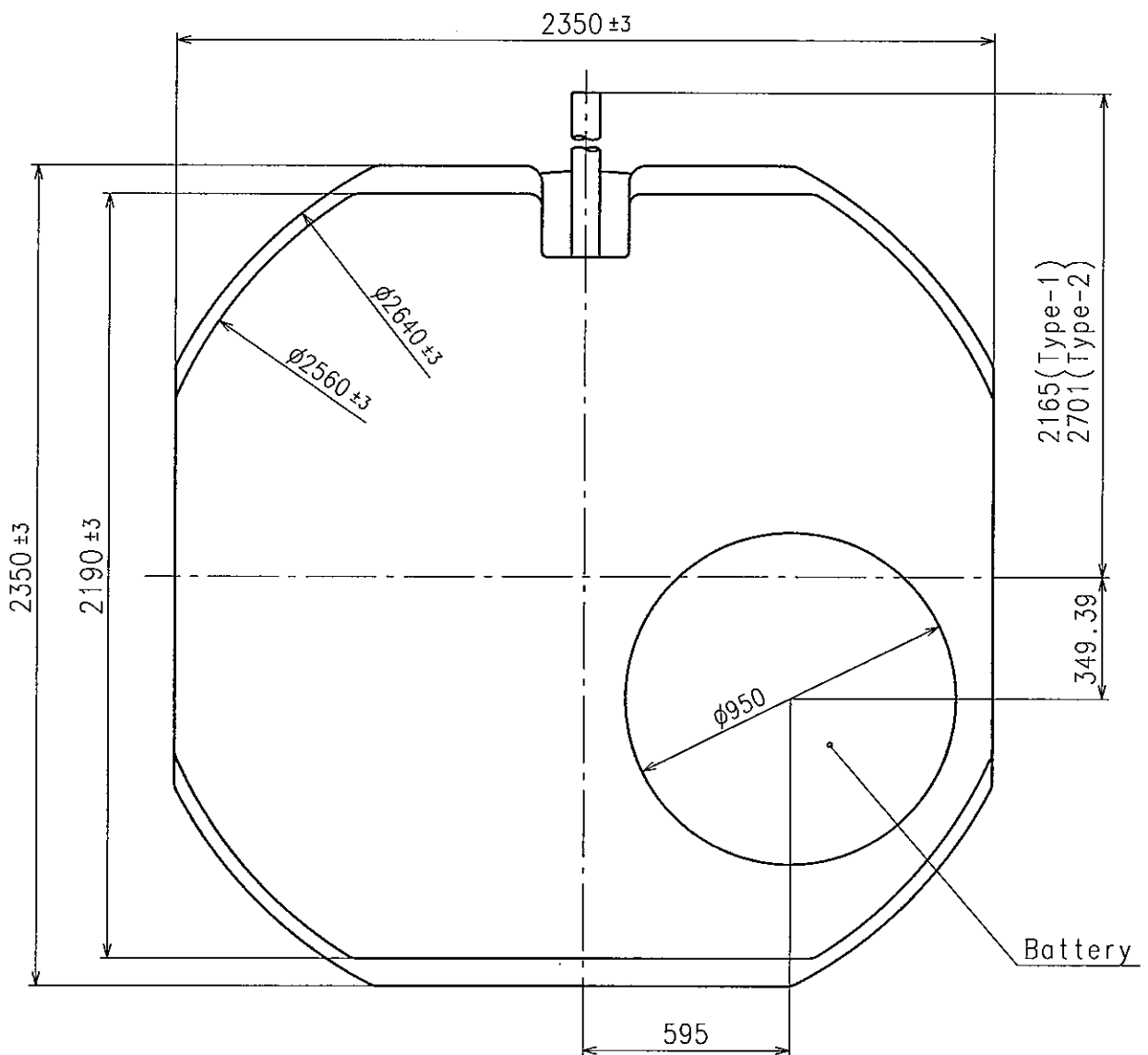
※ : Combination of dial leg hole A-B, (A-C)



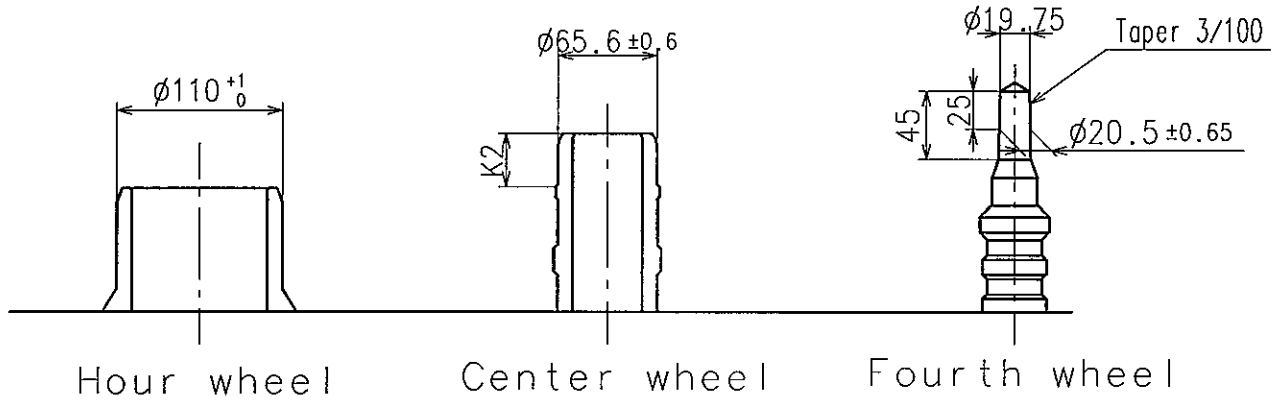
Center post		Type S (1) VX42E1*	Type M (2) VX42E2*
Maximum height from dial support	H1	140	182
Total height incl. movement	H2	402	444

*1: First pullout stroke

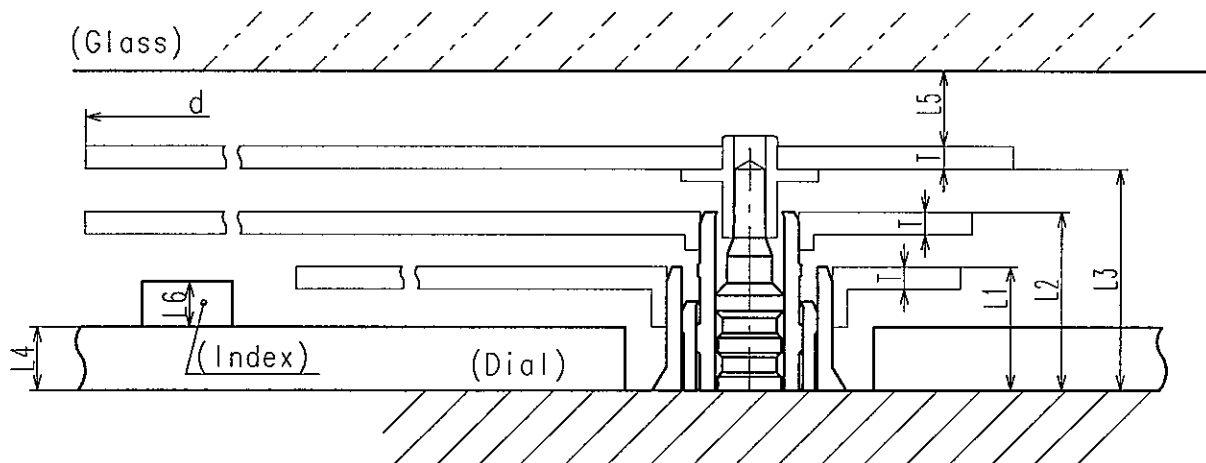
*2: Second pullout stroke



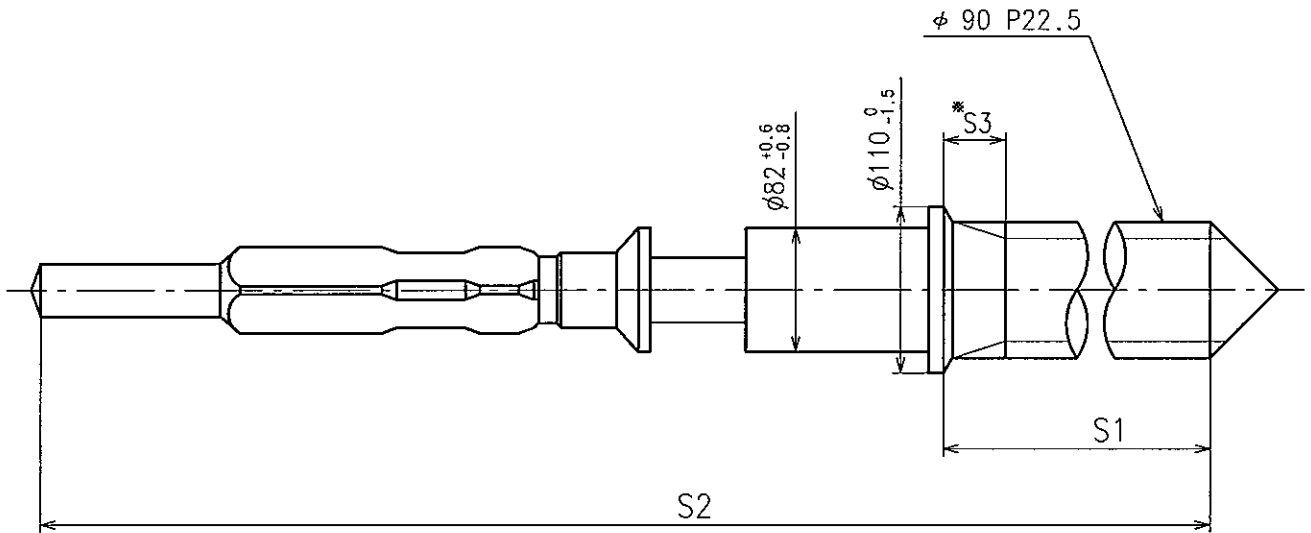
- ※ Hour hand unbalance $\leq 50\mu\text{g} \cdot \text{m}$ ($0.5\mu\text{N} \cdot \text{m}$)
- ※ Minute hand unbalance $\leq 60\mu\text{g} \cdot \text{m}$ ($0.6\mu\text{N} \cdot \text{m}$)
- ※ Second hand unbalance $\leq 7\mu\text{g} \cdot \text{m}$ ($0.07\mu\text{N} \cdot \text{m}$)



	Parts No.			Dimension
	Hour wheel	Center wheel	Fourth wheel	K2
Type S (1) VX42E1*	0271929	0221929	0241929	35
Type M (2) VX42E2*	0271942	0221904	0241904	35



	L1	L2	L3	L4	L5	L6	T	d
Type S (1) VX42E1*	75	112	140	40	MIN: 50	MAX: 30	15	MAX: ∅2500
Type M (2) VX42E2*	105	154	182	40	MIN: 50	MAX: 60	15	MAX: ∅2500

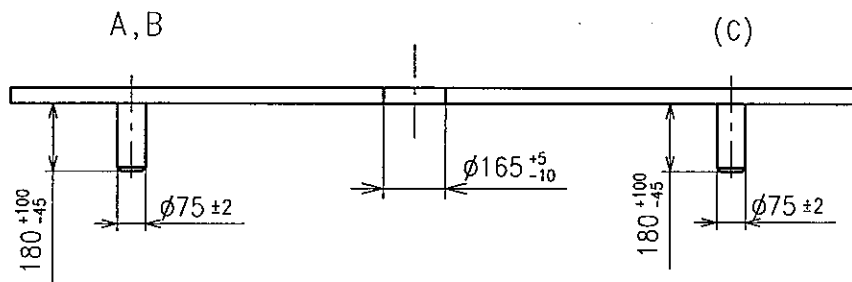
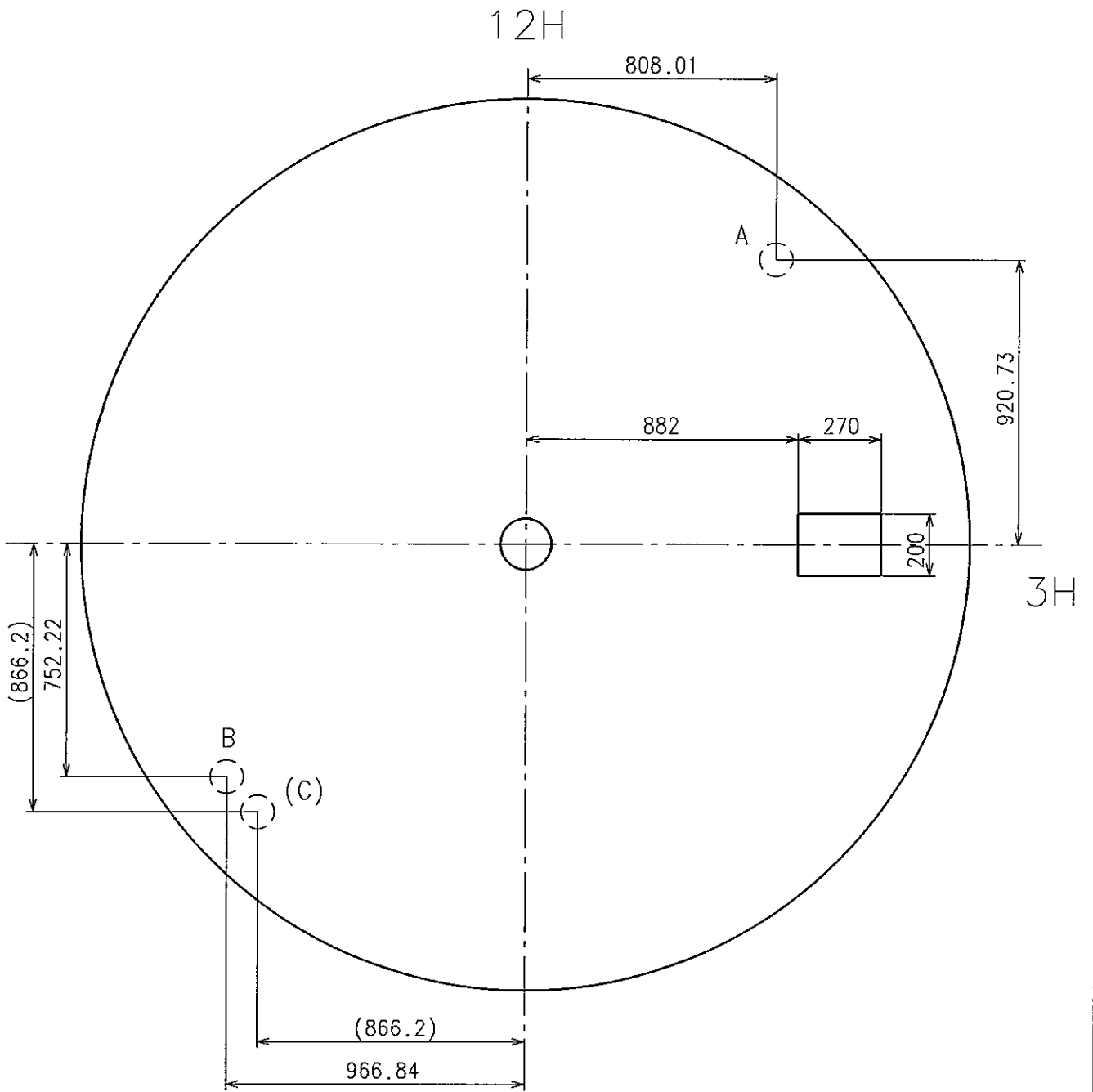


※ Not threaded

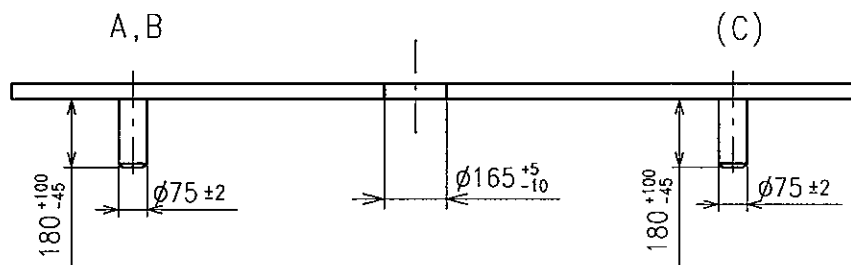
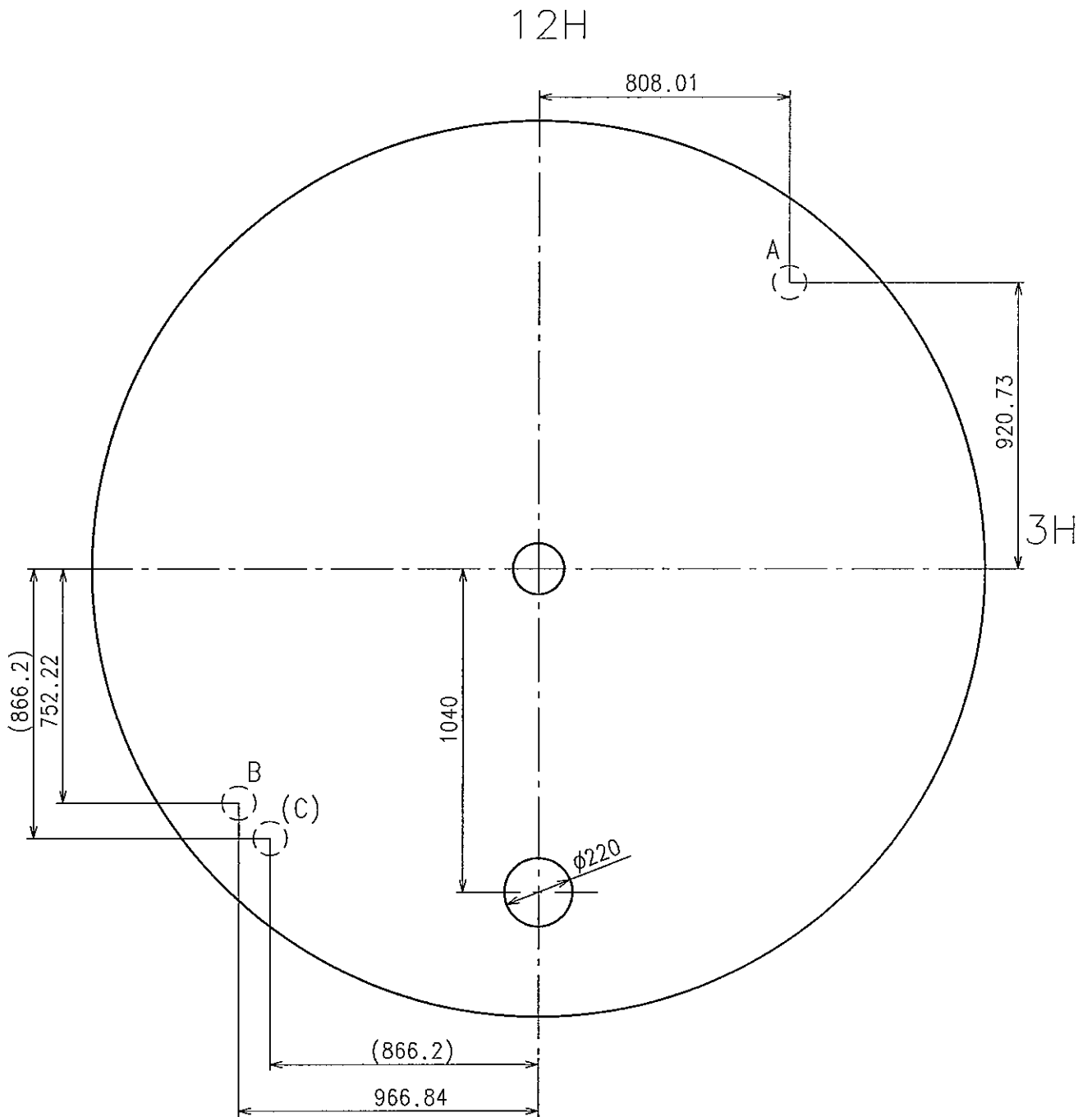
	Part No.	S1	S2	※ S3
Type-1 (Standard)	0351177	1366	1964	60
Type-2	0351577	1902	2500	1000

Material : Steel

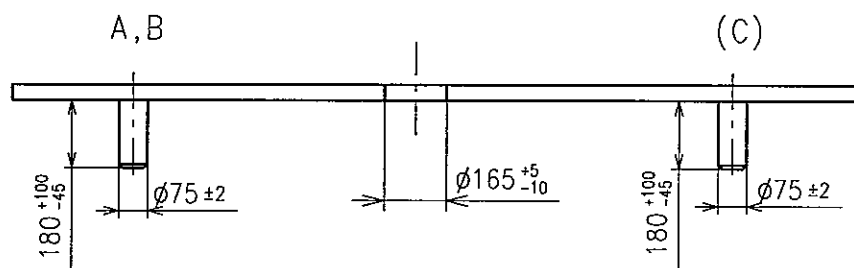
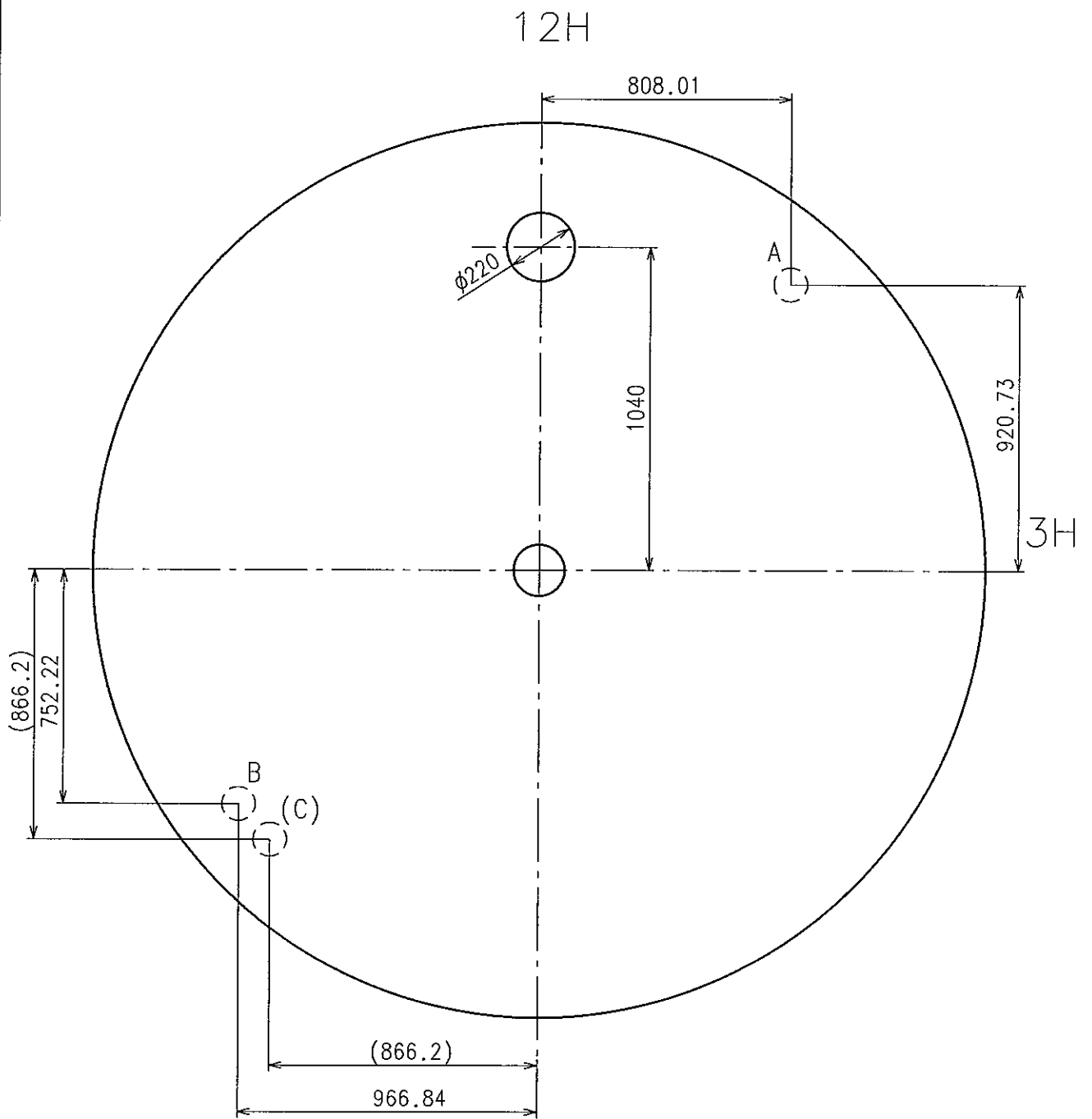
Hardness : Vickers 600±50



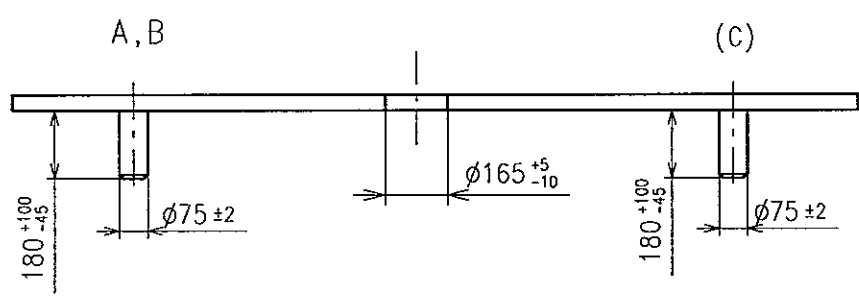
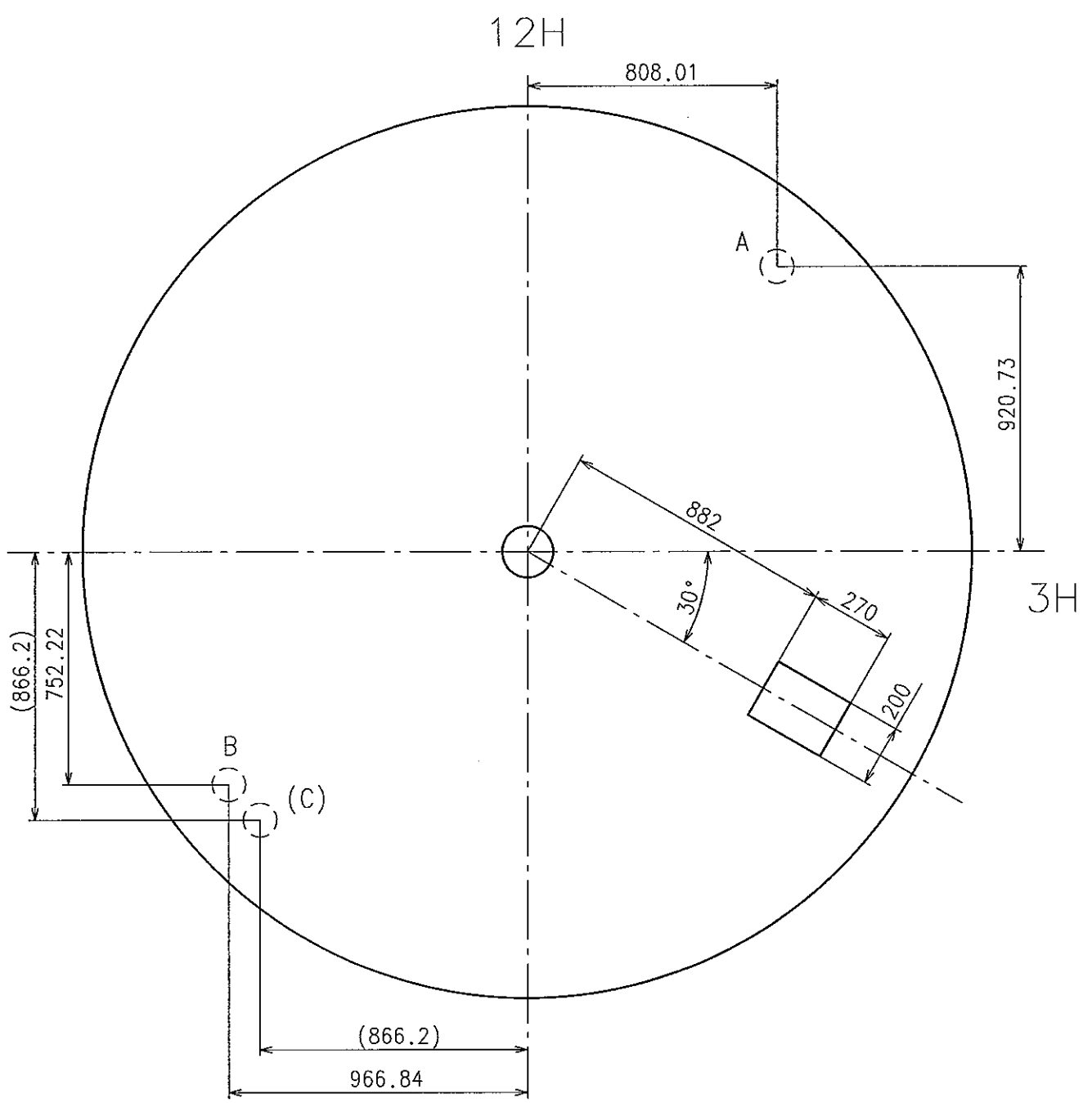
* Use dial leg hole as like below A-B or (A-C)



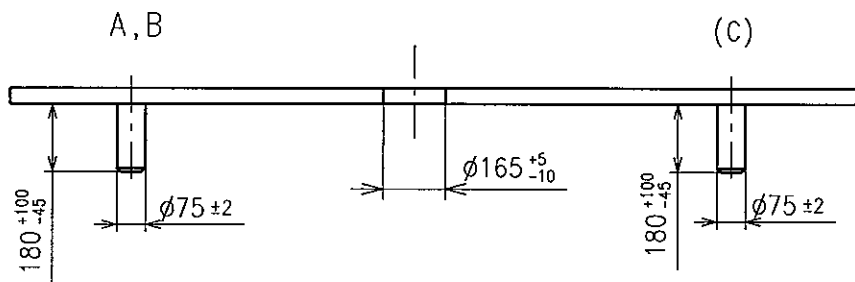
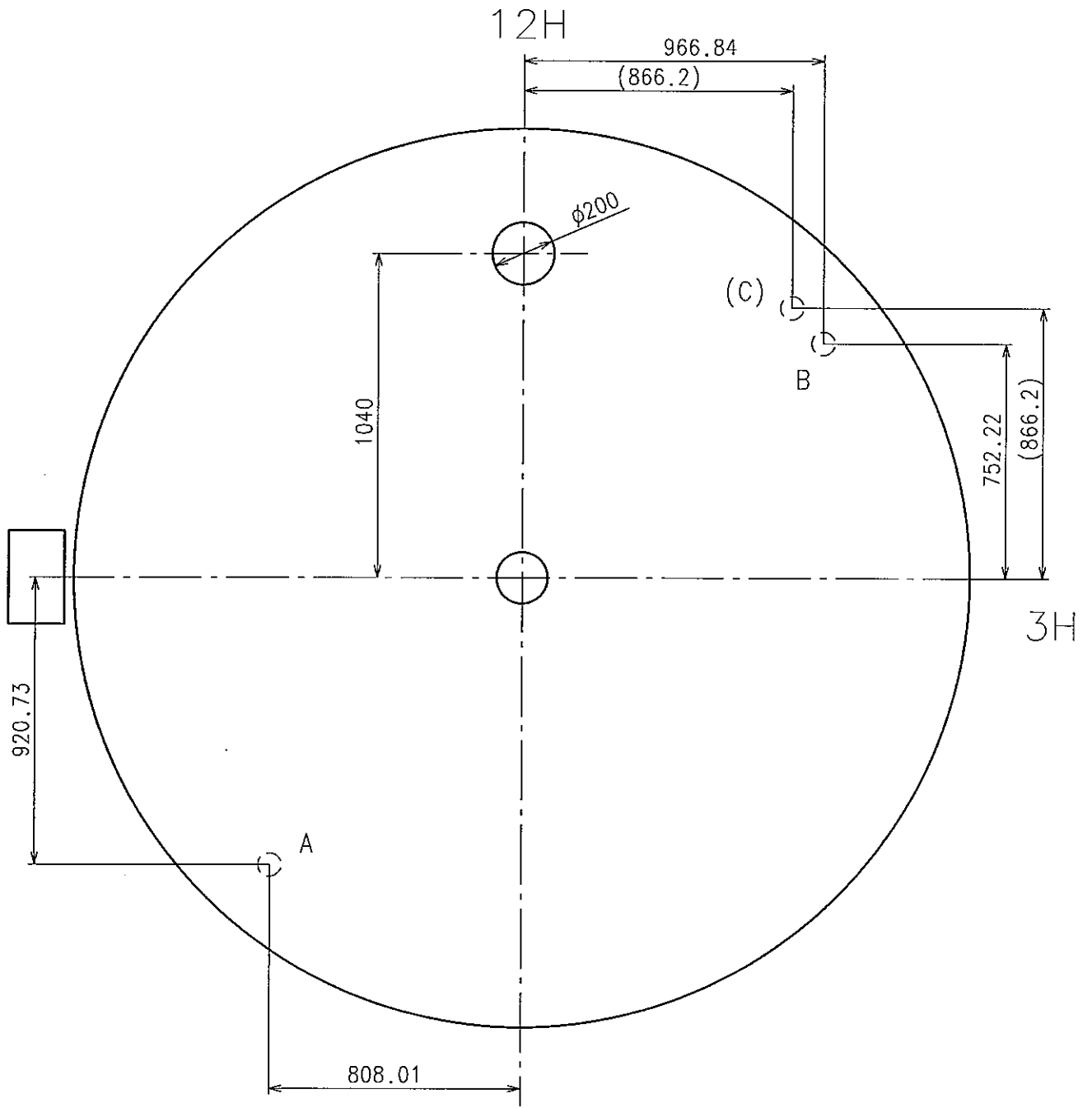
※ Use dial leg hole as like below A-B or (A-C)



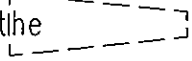
※ Use dial leg hole as like below A-B or (A-C)



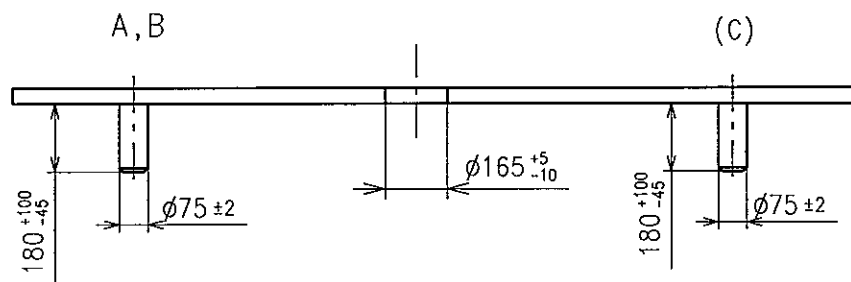
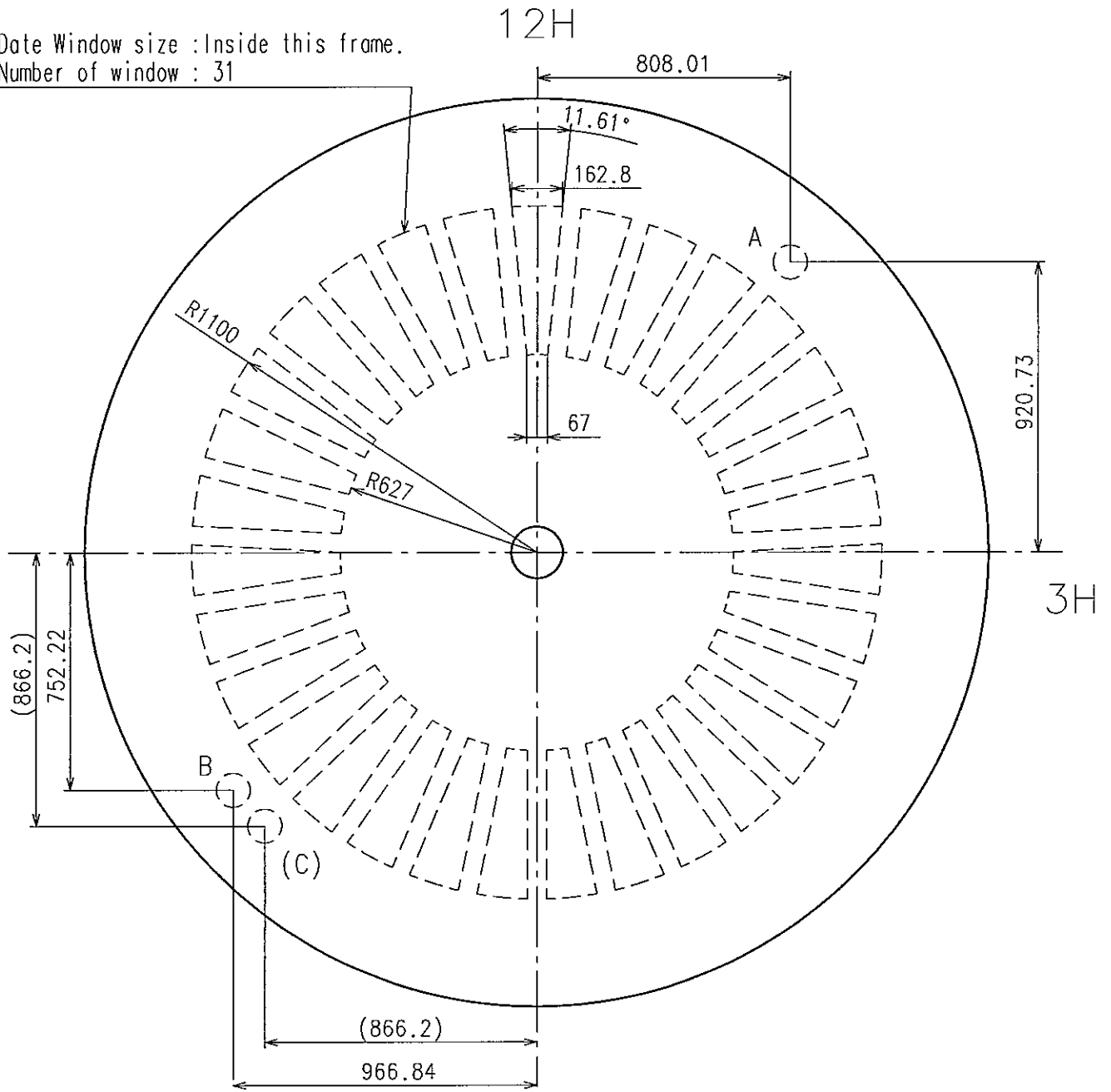
※ Use dial leg hole as like below A-B or (A-C)



* Use dial leg hole as like below A-B or (A-C)

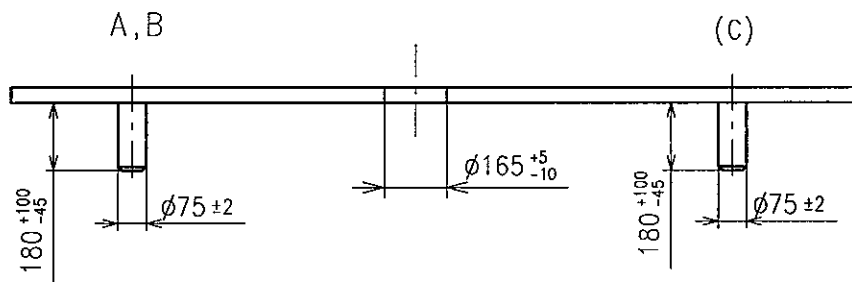
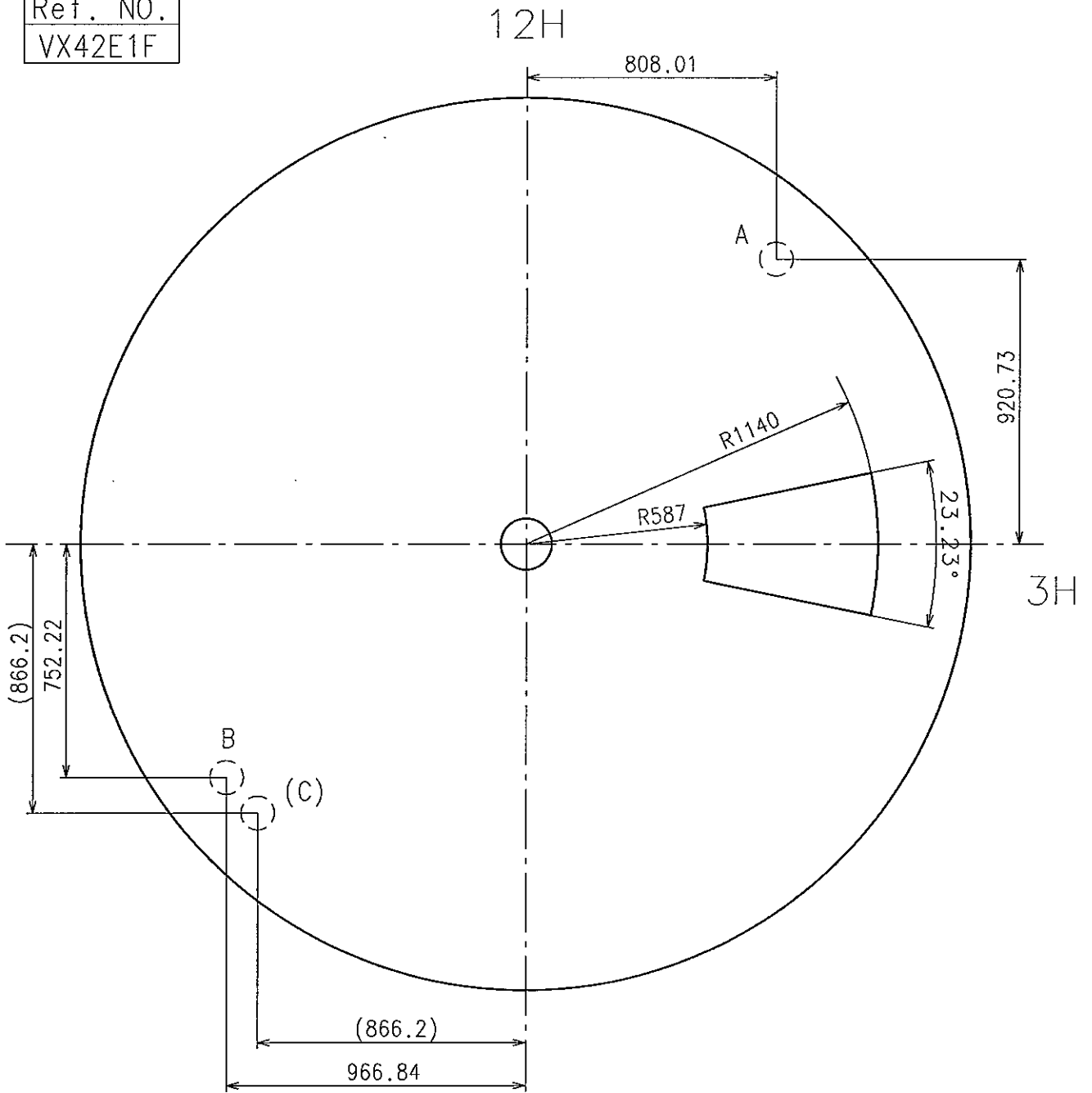
Free form of Date Windows are possible within the  frame.

Date Window size : Inside this frame.
 Number of window : 31



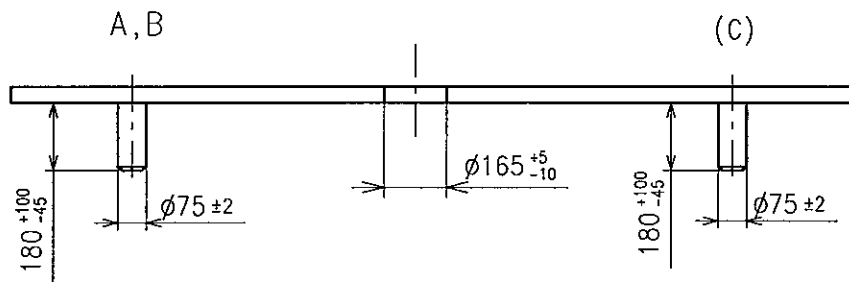
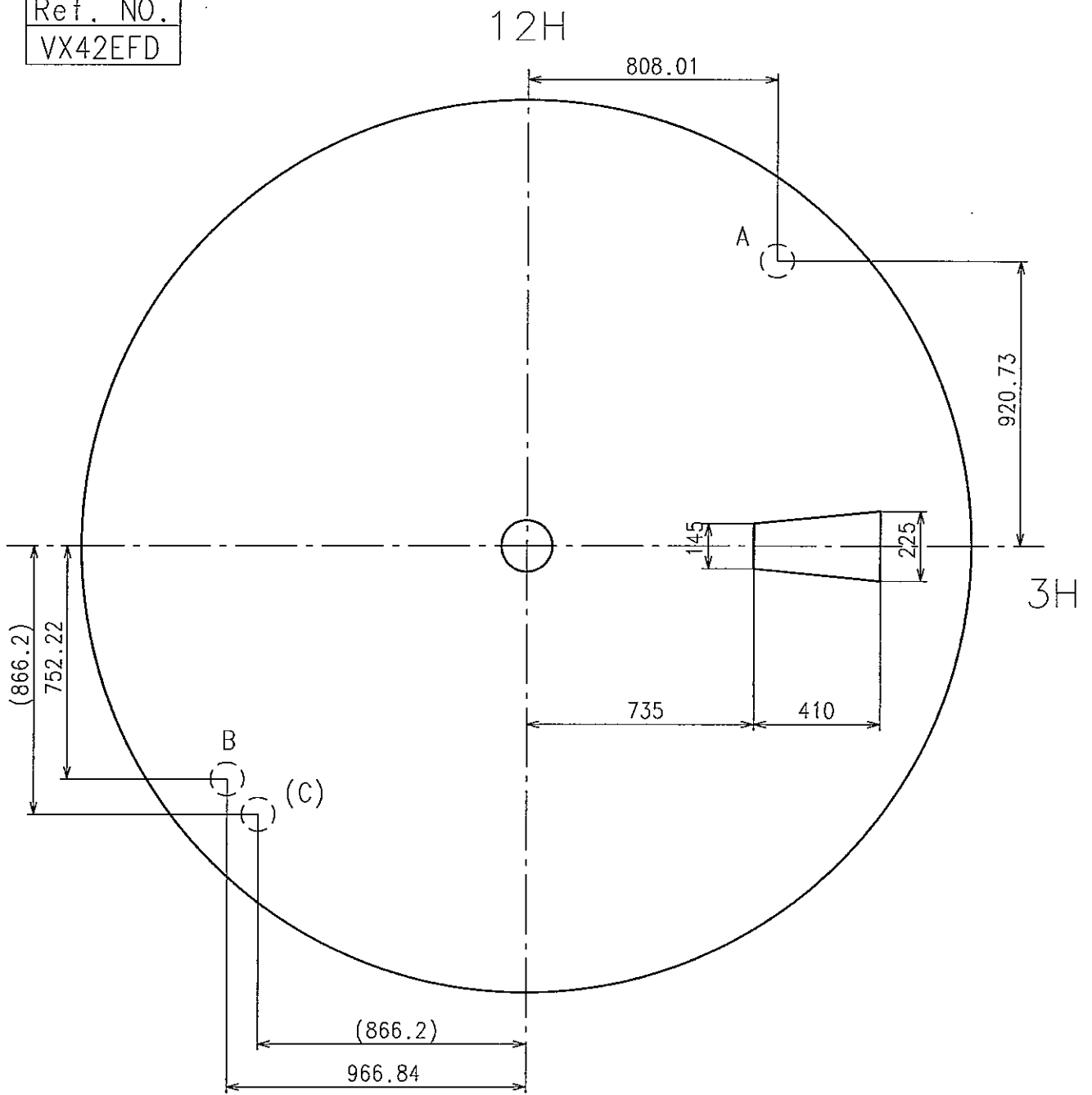
※ Use dial leg hole as like below A-B or (A-C)

Ref. NO.
VX42E1F



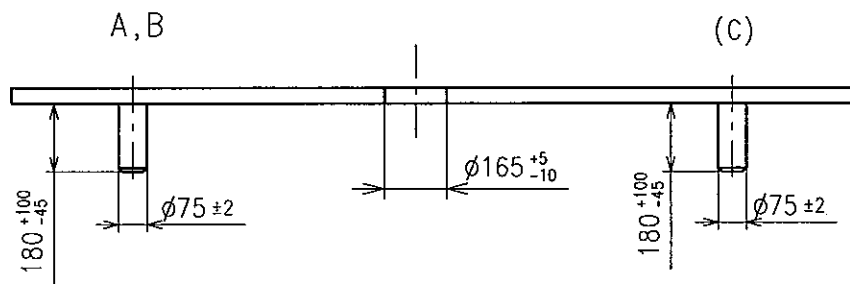
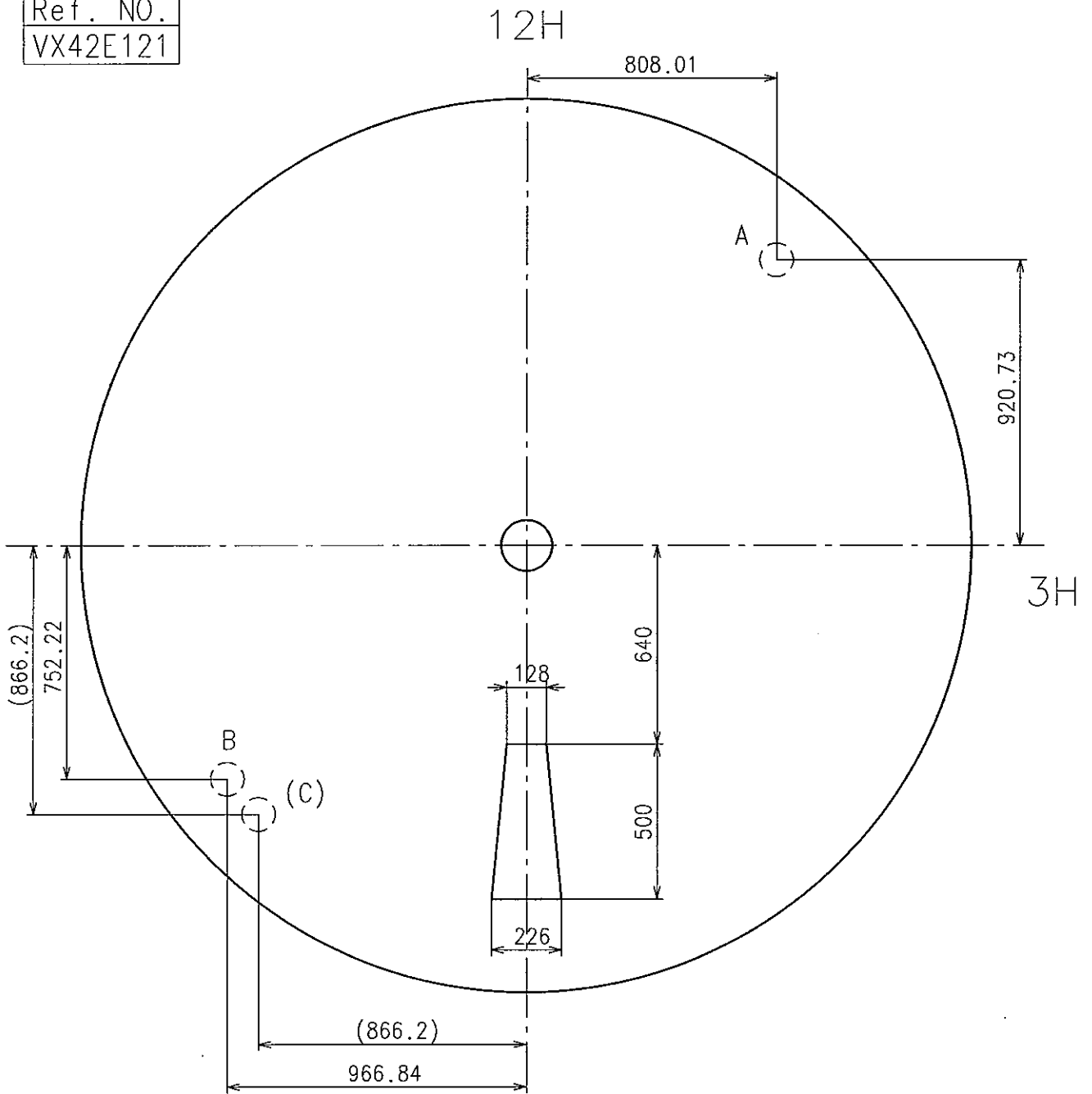
* Use dial leg hole as like below A-B or (A-C)

Ref. NO.
VX42EFD



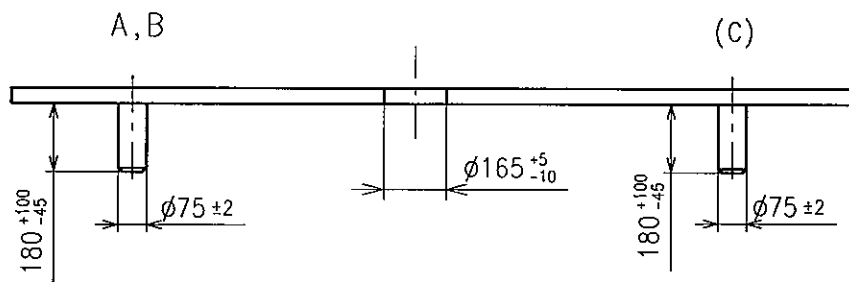
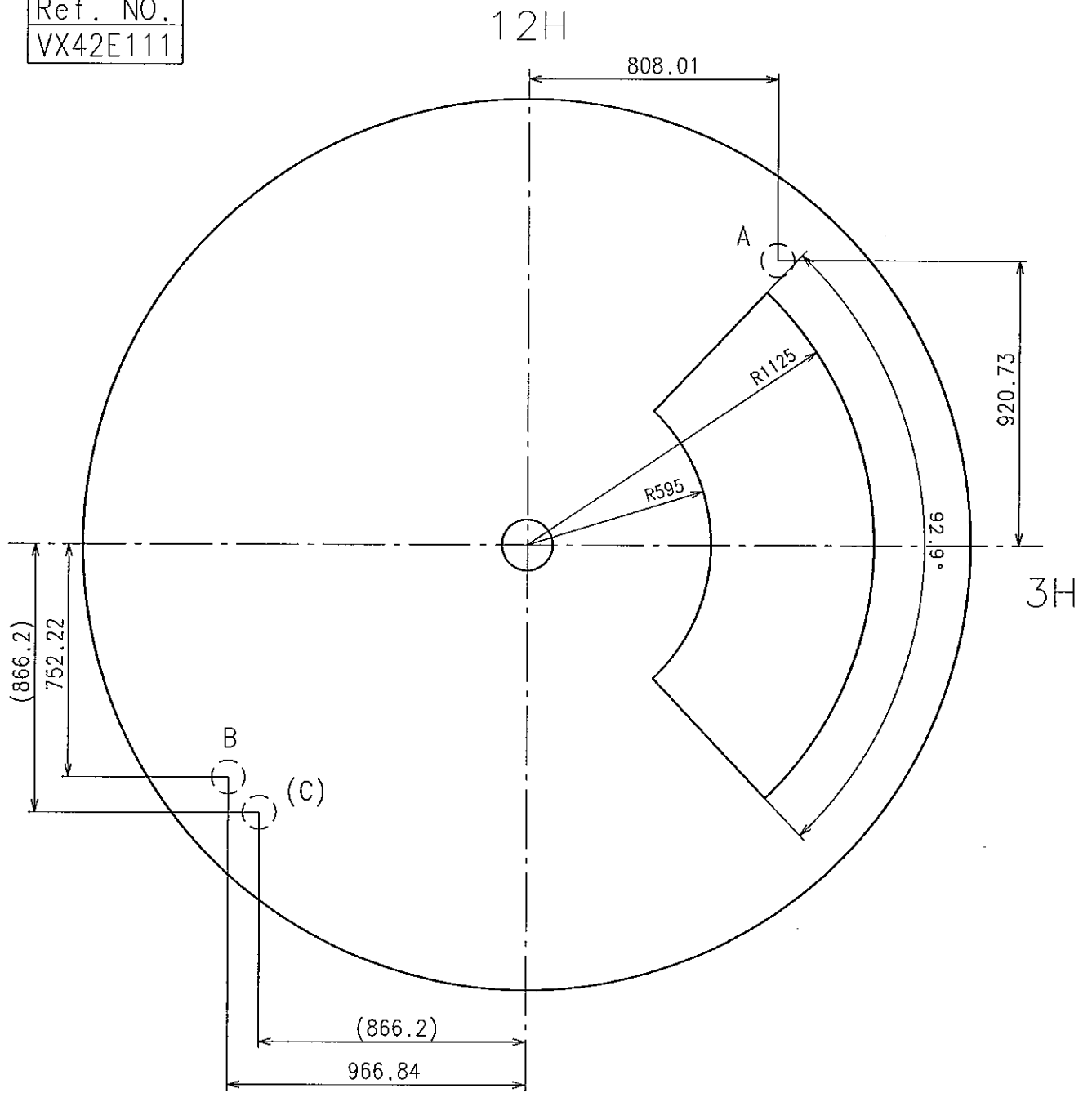
※ Use dial leg hole as like below A-B or (A-C)

Ref. NO.
VX42E121



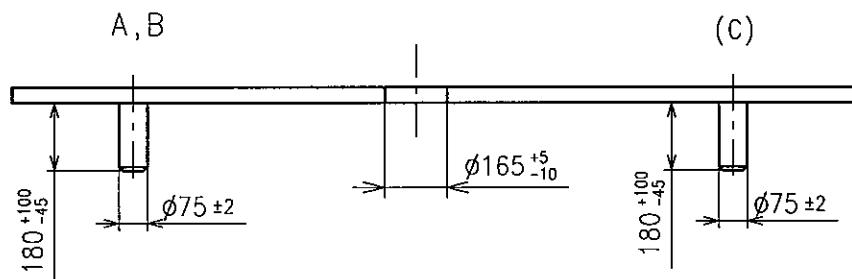
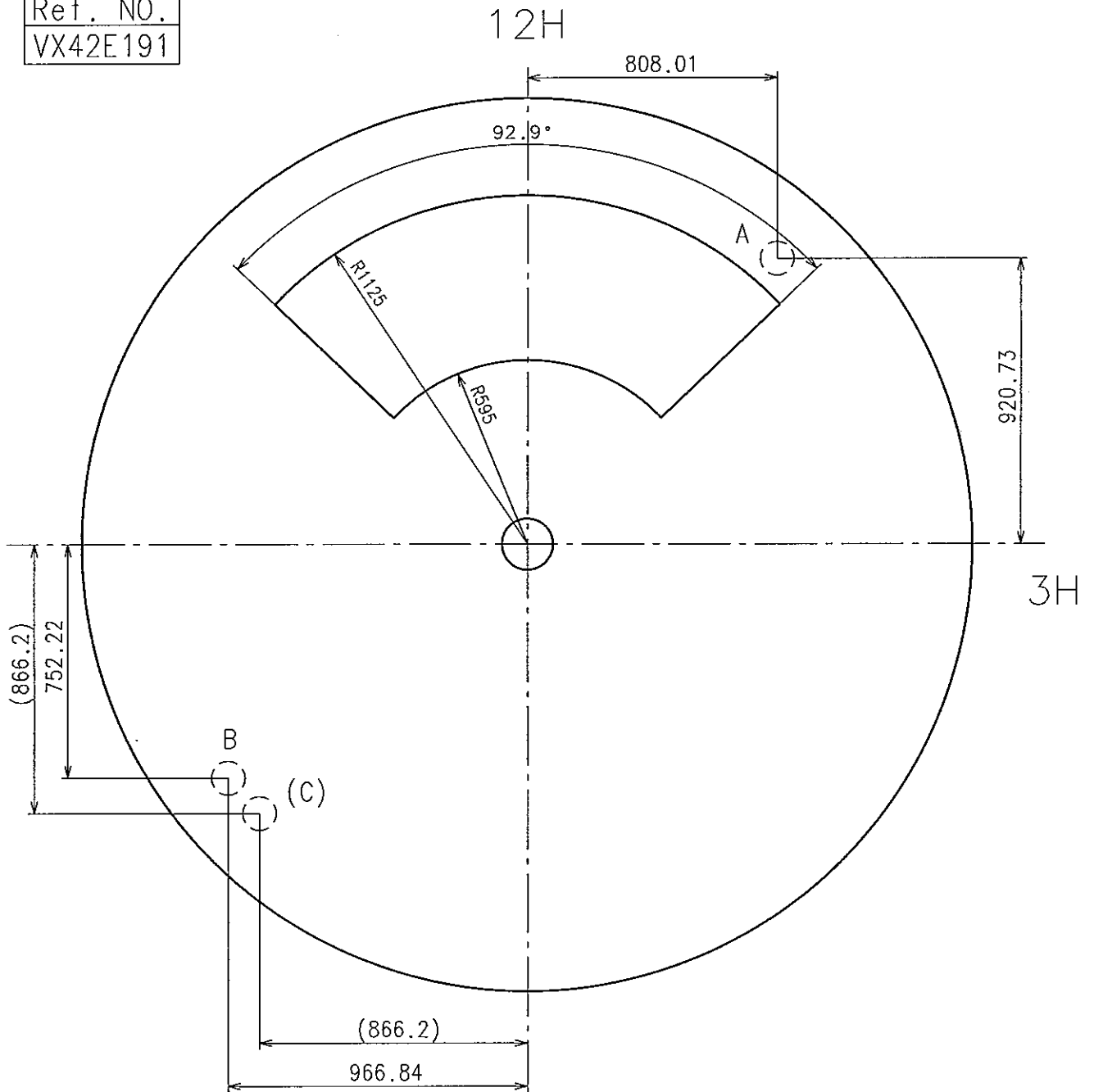
* Use dial leg hole as like below A-B or (A-C)

Ref. NO.
VX42E111



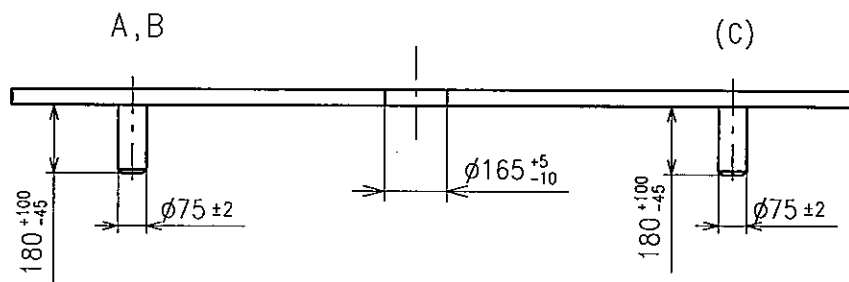
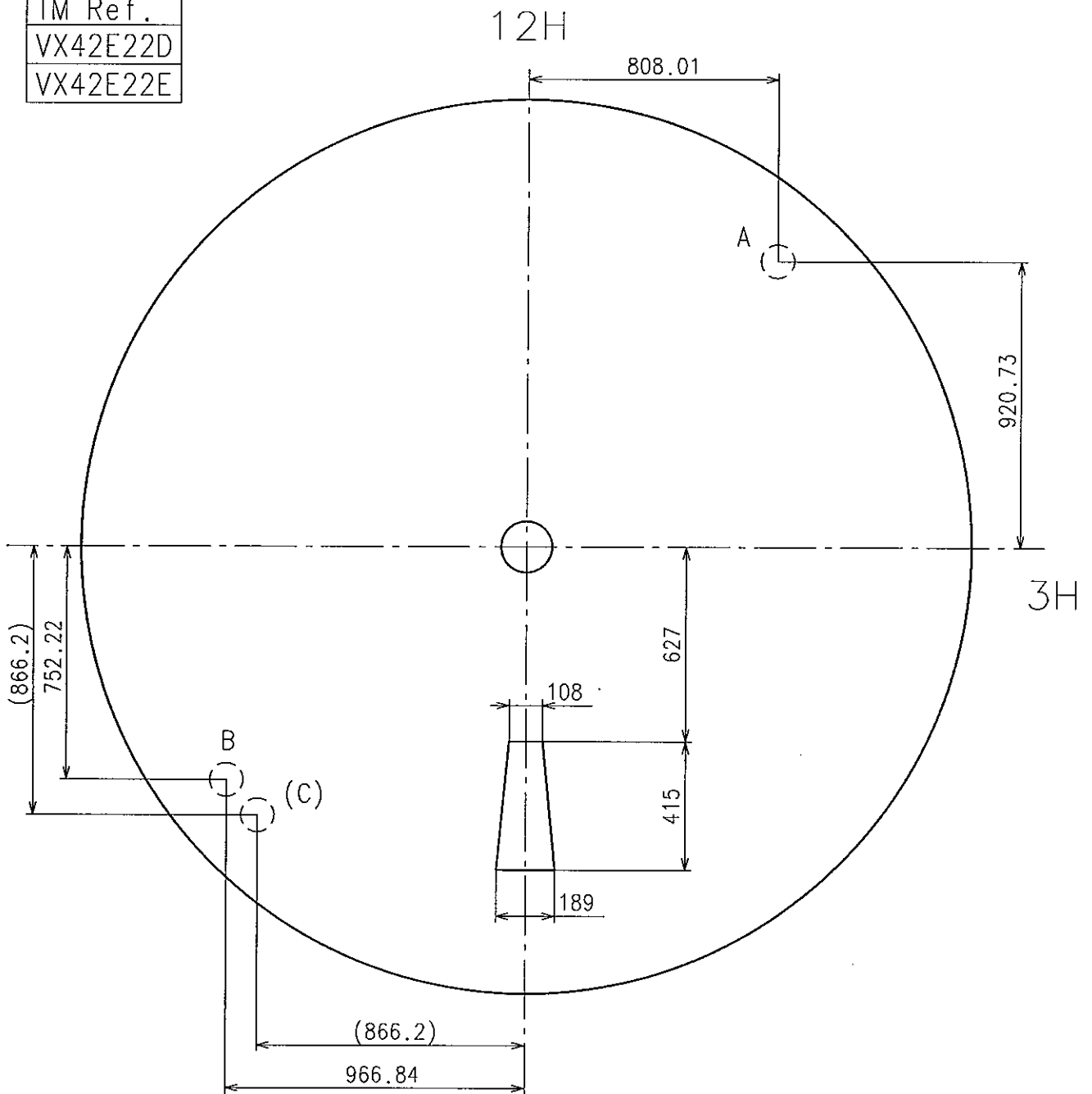
* Use dial leg hole as like below A-B or (A-C)

Ref. NO.
VX42E191

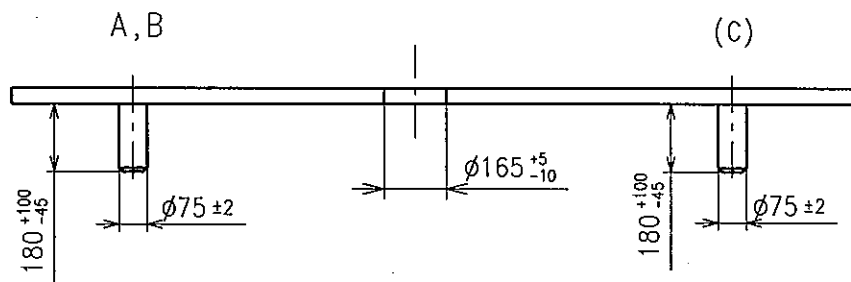
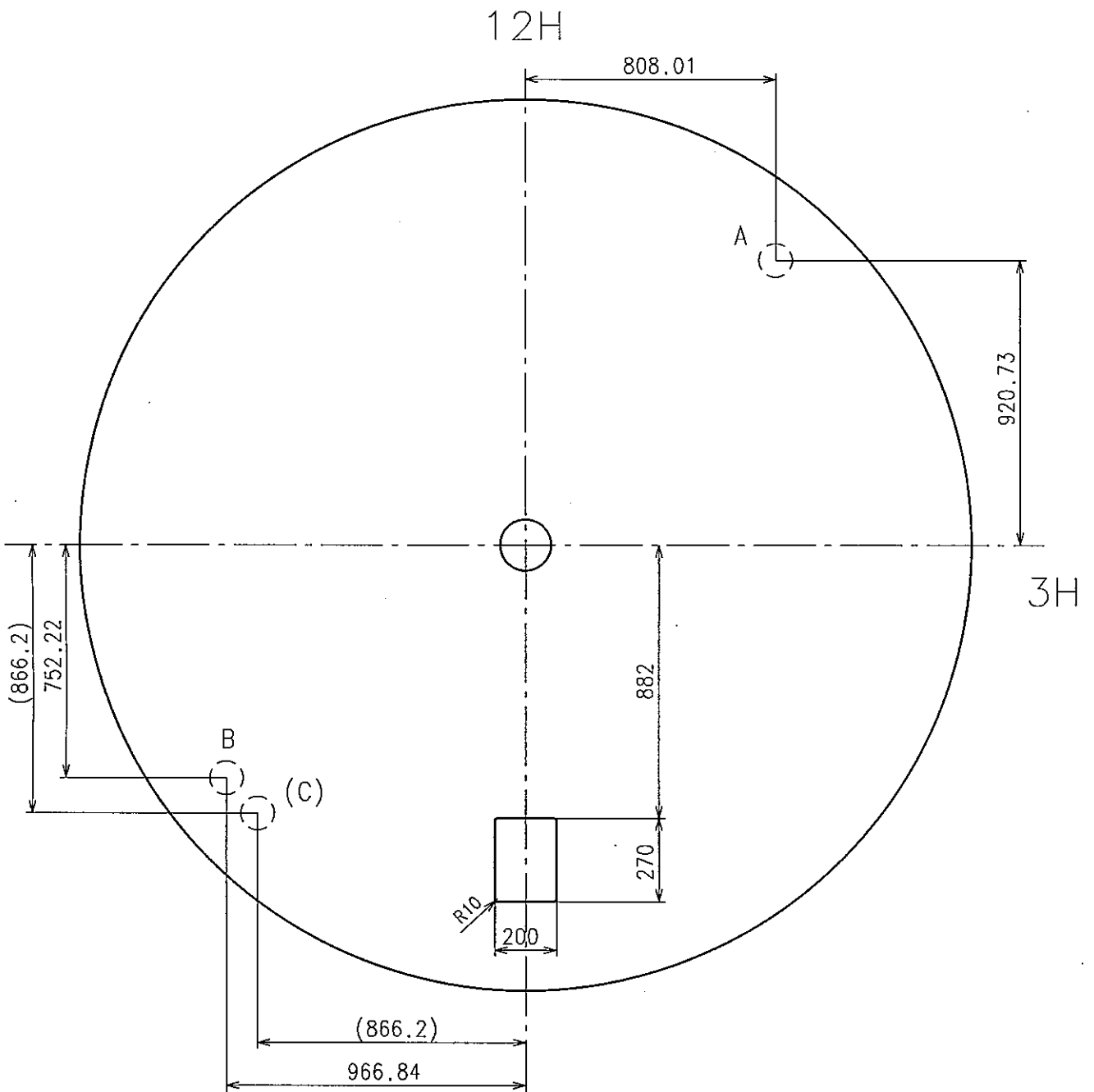


※ Use dial leg hole as like below A-B or (A-C)

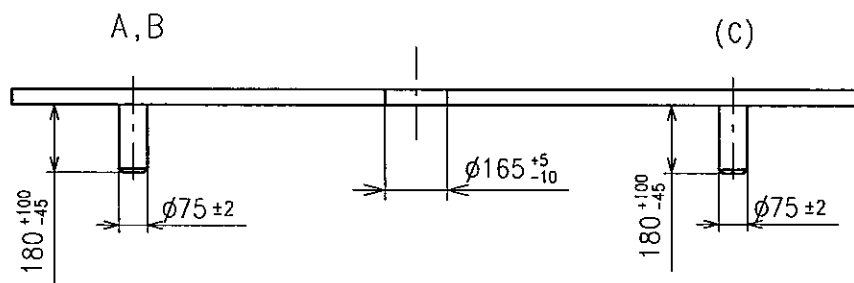
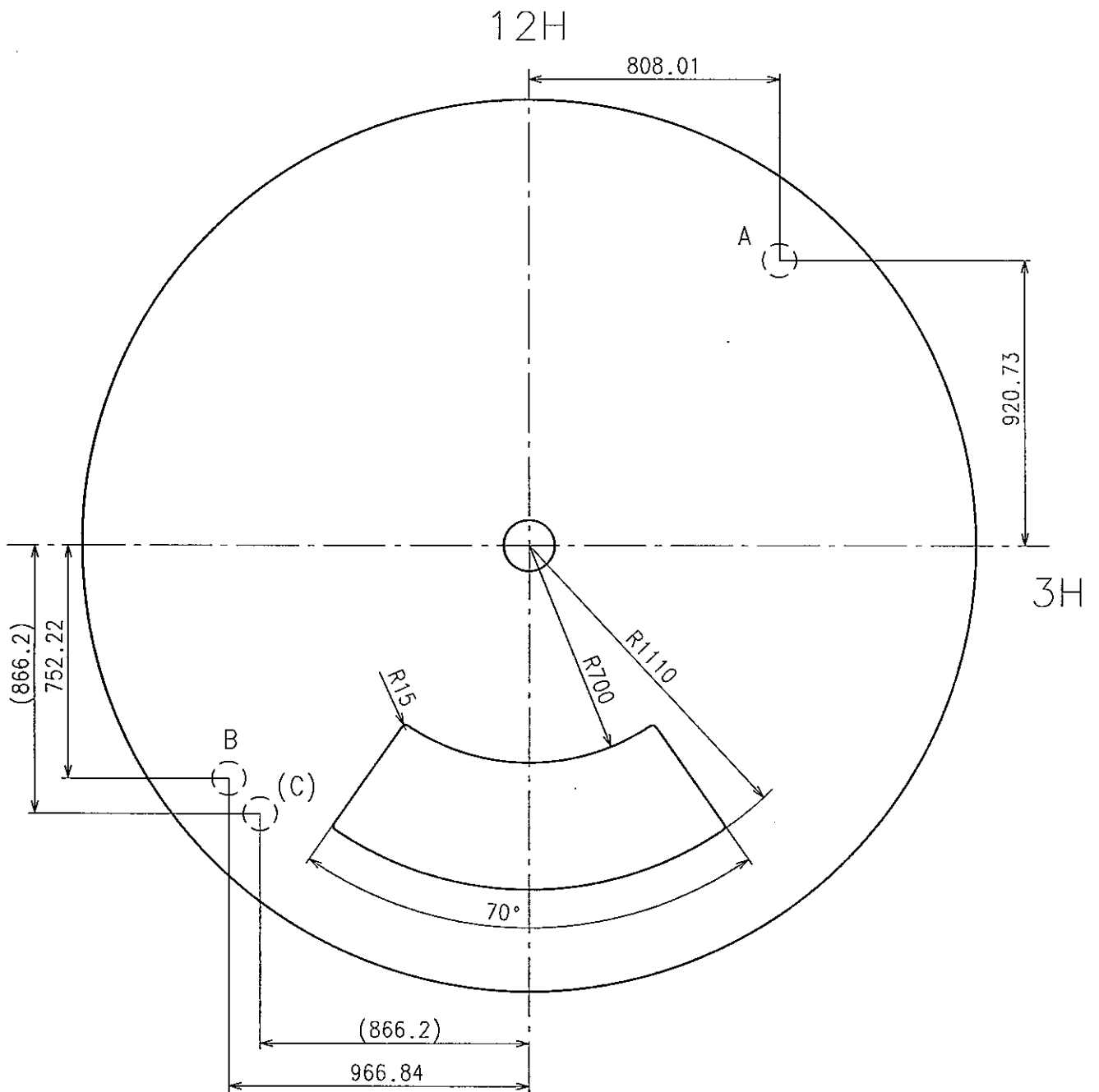
TM Ref.
VX42E22D
VX42E22E



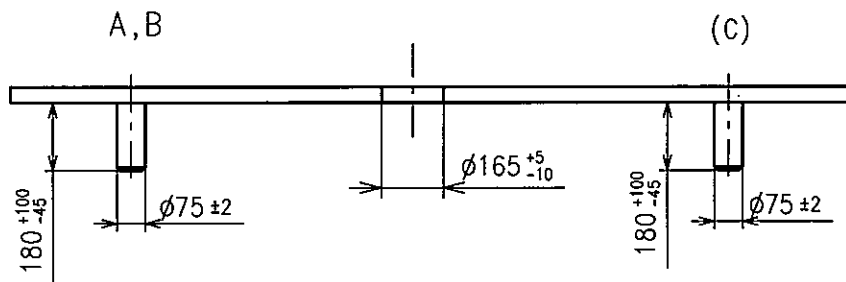
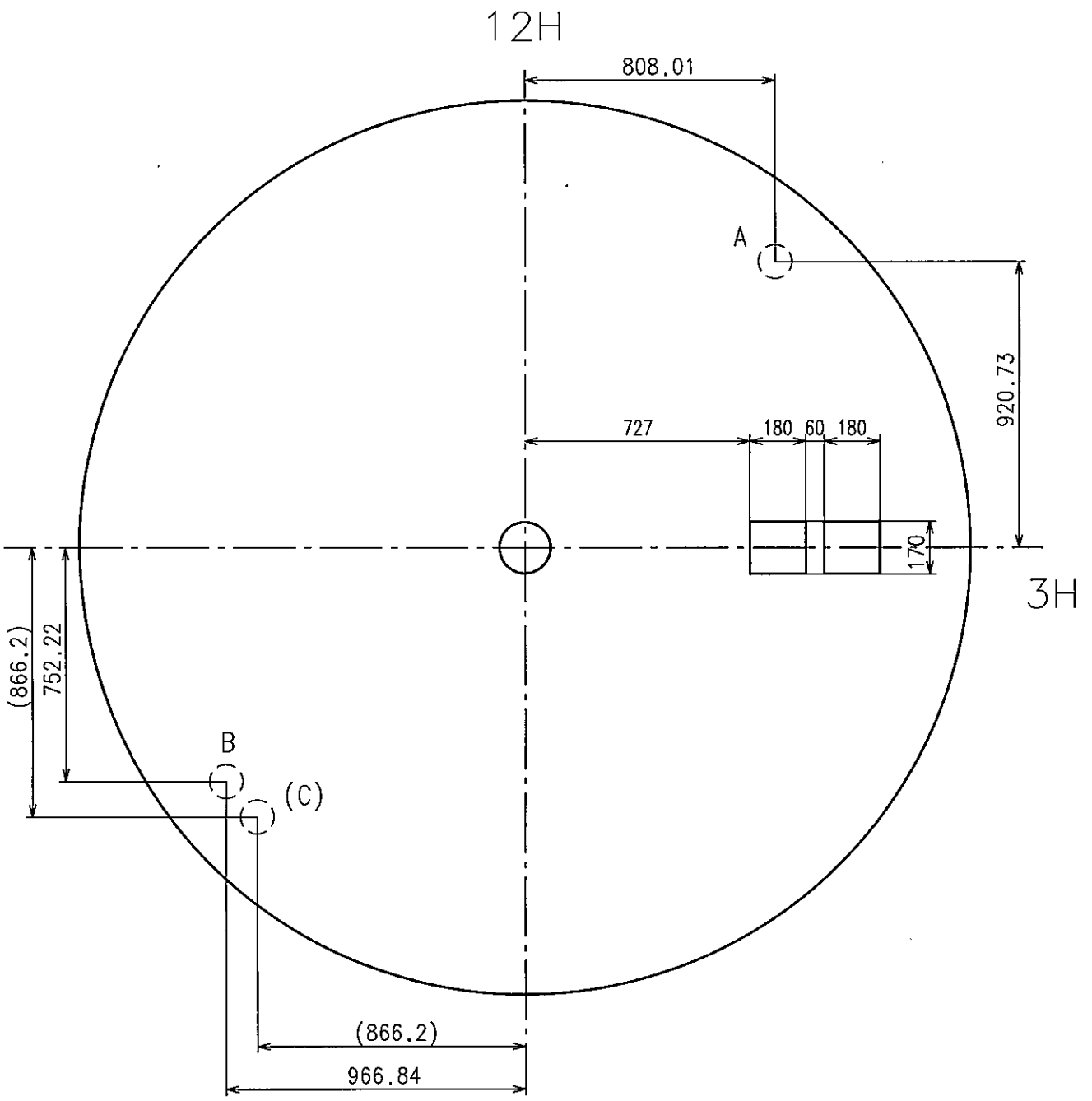
※ Use dial leg hole as like below A-B or (A-C)



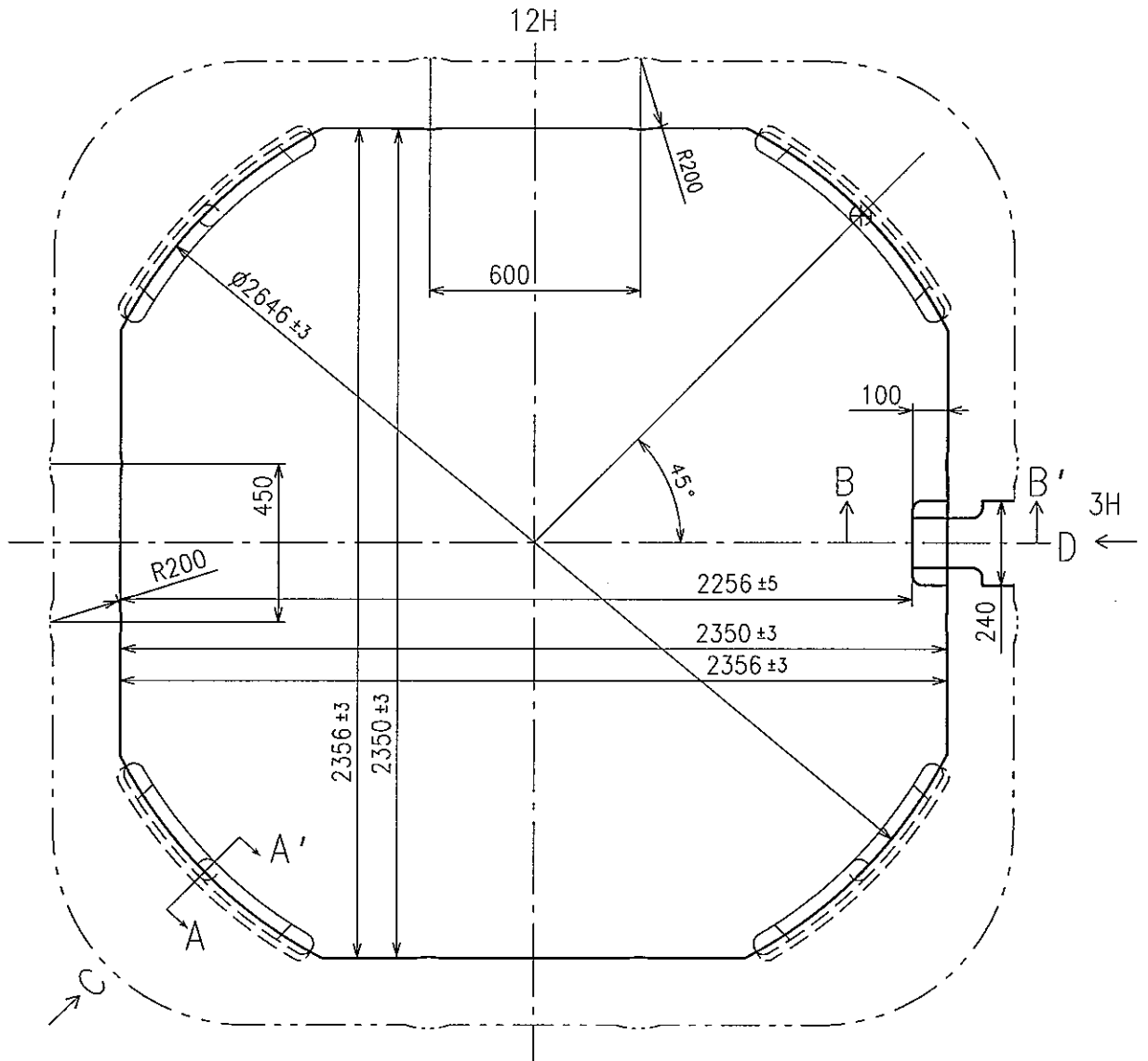
※ Use dial leg hole as like below A-B or (A-C)



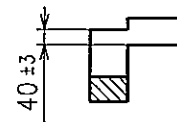
* Use dial leg hole as like below A-B or (A-C)



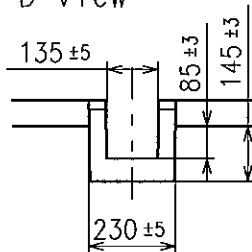
※ Use dial leg hole as like below A-B or (A-C)



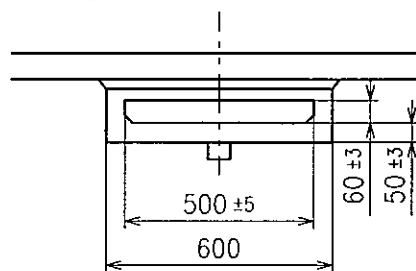
B-B' section



D view



C view



A-A' section

